



DESIGN  
IN BERLIN'S  
WEST CITY  
CENTRE

SANA BERLIN  
★★★★ Excellence Concept Hotel



# WELCOME TO SANA BERLIN

SANA BerIn Hotel is perfect for visitors that love to be right in the heart of the city. Uniquely designed for travelling on business or pleasure.

# IN THE CITY CENTRE

*THE BEST CHOICE FOR BUSINESS  
OR PLEASURE TRAVEL*

SANA Berlin is the ideal location to start exploring the city.

The hotel is located in the western part of Berlin, just a few minutes away from the famous KaDeWe department store and the commercial area of Kurfürstendamm. It is also close to some of the city's most emblematic places like the Brandenburg Gate, the Memorial Church, the Exhibition Centre, the beautiful Tiergarten Park and the Zoo.

\_ FRONT ENTRANCE



- Multilingual staff
- Air conditioning
- Lobby Bar
- Restaurant
- Business centre
- Smoke detector
- Lifts
- Free WiFi
- Laundry / Dry cleaning
- 24-hour Reception
- Indoor car park
- Fitness Centre
- Currency exchange
- City tours
- Information desk
- Rent-a-car

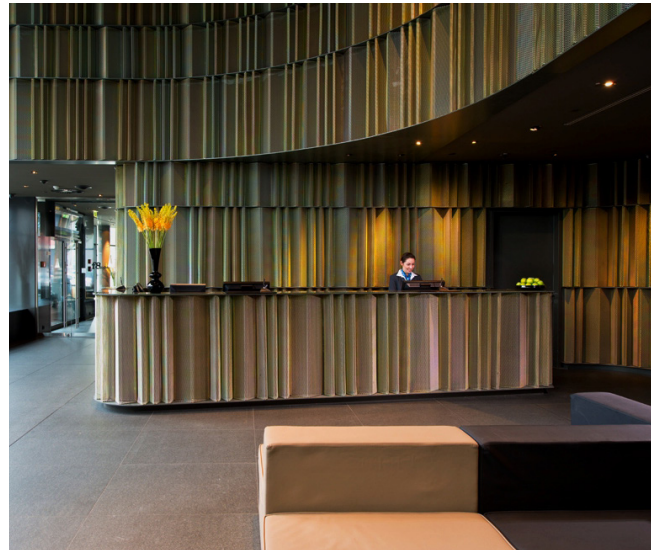
Hotel Services  
Facilities\_



\_ LOBBY



\_ RECEPTION



\_ BAR



# PRIVILEGED LOCATION

## A UNIQUE HOTEL AND CITY

Discover the heart of one of Europe's most cosmopolitan cities and explore the cultural, leisure and business possibilities that SANA Berlin Hotel has to offer.

With a prime location near the Tiergarten Park, the Zoo and the internationally renowned KaDeWe department store, the only excuse for not enjoying Berlin's life is that you do not want to leave the hotel.

Packed with places of historical interest, Berlin reveals itself in a mixture between the old and the new. Take the opportunity to visit or revisit some of the city's most emblematic places, in the vicinity of SANA Berlin Hotel.

\_ BRANDENBURG GATE



\_WEATHER

 SPRING | 20°C ▲▼ 15°C

 SUMMER | 32°C ▲▼ 18°C

 AUTUMN | 17°C ▲▼ 12°C

 WINTER | 15°C ▲▼ 9°C

Exhibition Centre  
Kaiser-Wilhelm Memorial Church  
Government District  
Museum Island  
Berlin Olympic Stadium  
Brandenburg Gate  
Berlin Zoo  
Theater des Westens  
Kurfürstendamm

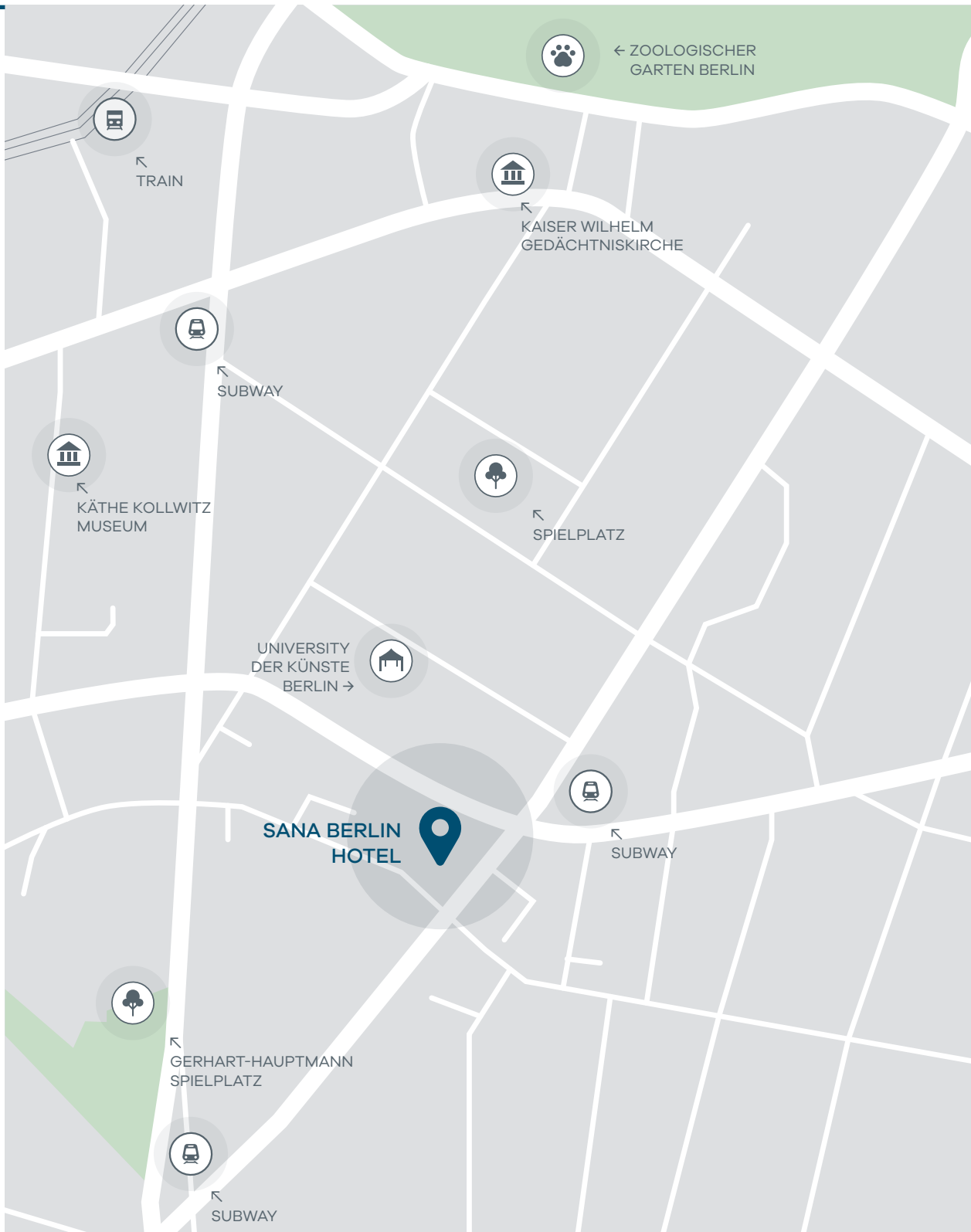
### TRANSPORTS

Metro stations  
Central Train Station  
Airport BBI Berlin Brandenburg  
Zoologischer Garten railway station

## Surroundings\_

# SANA BERLIN ON THE MAP

CLOSE TO THE MOST IMPORTANT SITES  
AND PUBLIC TRANSPORTS



# ACCOMODATION

DESIGN AND COMFORT  
LOOK GREAT TOGETHER

SANA Berlin Hotel offers a total of 208 rooms, including 13 Suites and 42 Apartments with an elegant and contemporary design.

Rooms are all equipped with hairdryer, heated bathroom floors, air conditioning, telephone, flat-screen TV, Wi-Fi, as well as a safe and a minibar. A comfortable and sophisticated atmosphere, with a well-equipped gym.

153 / DOUBLE ROOMS

1 / SUITE

12 / JUNIOR SUITES

18 / SANA RESIDENCE T1

18 / SANA RESIDENCE T2



\_ DOUBLE ROOM



- Magnifying mirror
- Hairdryer
- Wireless High Speed Access
- Air conditioning with individual control
- Room service
- Wake up service
- Fire safety system
- Digital safe
- Telephone
- Smart TV
- Minibar
- Rooms for guests with limited mobility (6 rooms)
- Double glazing

## Services Facilities\_

\_ DELUXE ROOM



\_ PREMIUM DELUXE ROOM



\_ JUNIOR SUITE





# SANA RESIDENCE APARTMENTS

*DESIGN AND COMFORT*

The spacious studios and flats are modern and comfortably furnished and have a fully equipped kitchen, 1 to 2 separate bedrooms, large bathrooms with a bathtub and an intercom system with camera function.

A separate entrance leads from the outside and directly from the garage to the flats, which are quietly located in a separate part of the hotel.



## Services\_

- Indoor pool
- Fitness room & saunas
- Massage service
- Concierge service
- Room service
- Restaurant
- Lobby Bar
- Lounge
- Underground car park
- Meeting rooms
- Terrace

\_ SUITE HOME | 2 BEDROOM APARTMENT



\_ SPACIOUS BATHROOMS WITH BATHTUB



\_ SUITE HOME | 1 BEDROOM APARTMENT



# FOOD AND BEVERAGE

*TASTE THE FRESHNESS,  
DISCOVER THE PASSION*

With a contemporary décor the Restaurant & Lobby Bar presents the most delicious gastronomic creations, inspired by Portuguese and German cuisine.

Our open air patio offers a bright and elegant atmosphere, perfect to relax or simply enjoy a snack or a drink, after a sightseeing day in Berlin.

\_RESTAURANT, INTERIOR



\_BAR, EXTERIOR RESTAURANT



# MEETINGS & EVENTS

*IN THE HEART OF BERLIN*

SANA Berlin Hotel offers 6 modern and quiet conference rooms with natural light, providing the perfect conditions for a focused, creative work.

With a central location, close to the beautiful Tiergarten Park, and the lively artery of the former West Berlin - Kurfürstendamm, SANA Berlin Hotel offers the perfect setting for your event.

## \_ CONFERENCES



## \_ COFFEE BREAK



- Natural daylight
- Wireless Internet
- Blackout of rooms possible
- Moveable walls
- Modern audio-visual equipment
- Air conditioning with individual control
- LED Wall

## Facilities\_

A hand is shown reaching out from the right side of the frame towards a digital globe on the left. The globe is rendered as a wireframe mesh of light blue lines. The background is a dark blue gradient with a network of white lines and dots, suggesting a digital or data environment. The overall aesthetic is futuristic and technological.

SAN.IA

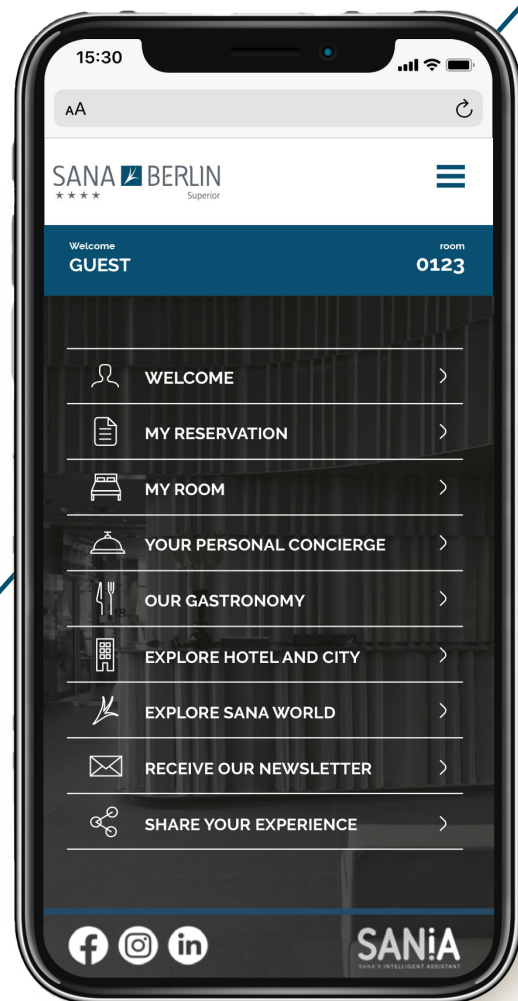
WELCOME TO  
THE FUTURE

**SANiA**  
SANA'S INTELLIGENT ASSISTANT

# YOUR HOTEL IN THE PALM OF YOUR HAND

Hi,  
I'm SAN.IA, your Intelligent Assistant at SANA Hotels. I'm here to welcome you to SANA Berlin and to place all the hotel services in your hands.

Discover how to have access to all the hotel services from your mobile device, in a quick and easy way. Just scan the QR code and through our web app you can make your wishes come true, ask for special requests and have access to information. All this for you to save time and make the most of every moment of your stay.



Everything SAN.IA  
can do for you\_

- Manage your reservation
- Room service
- Reservations and access to restaurant menus
- Services related to your room
- Additional services
- Information about the SANA World

The background is a vertical composition. The left side shows a view of Earth from space, with a thin blue atmosphere and swirling white clouds over a dark blue ocean. The right side transitions into a dark, starry galaxy with bright, golden-yellow light trails and clusters of stars. The text is overlaid on the left side of the image.

# SANA WORLD

A WORLD  
OF UNIQUE  
SENSATIONS

# SANA HOTELS

*THE PERFECT WORLD TO EXPERIENCE  
UNIQUE SENSATIONS*

SANA Hotels are perfect for those who like to experience unique sensations. More than a group of hotels, it is a set of exclusive concepts, a sensorial project where each hotel unit has its own personality, nuances, flavours and distinctive tones.

We provide unforgettable moments, always ensuring comfort and quality, exceeding your expectations.

Get to know  
all the other units  
that integrate  
the SANA world\_





# SANA IN THE WORLD

*IN CONTINUOUS EXPANSION*



GERMANY

PORTUGAL

MOROCCO\*

GEORGIA\*

ANGOLA

The SANA world is constantly expanding, designing unique hotels, each with its own personality, but always focused on providing exceptional service. Explore all our hotels and future projects at [sanahotels.com](https://sanahotels.com).

\* SOON

# TALK WITH US

---

## SANA BERLIN

Nürnberger Straße 33/34, 10777 Berlin

F +49 (0)30 20051519

T +49 (0)30 20051519

E [sanaberlin@sanahotels.com](mailto:sanaberlin@sanahotels.com)

---

SANA  HOTELS  
A WORLDWIDE CONCEPT

[BERLIN.SANAHOTELS.COM](http://BERLIN.SANAHOTELS.COM)

